

Smart Bulb

User Manual



Alexa, turn on light



Download "Smart Life" app



Download on the
APP Store



Get it on
Google Play

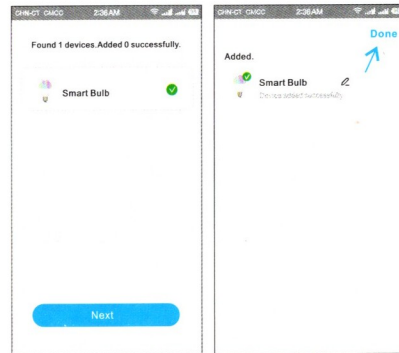
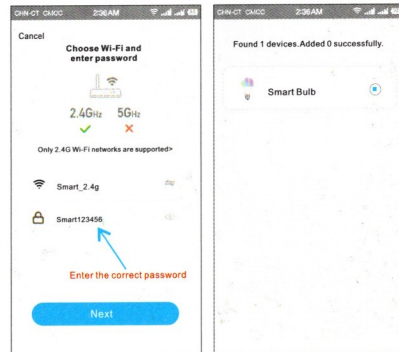
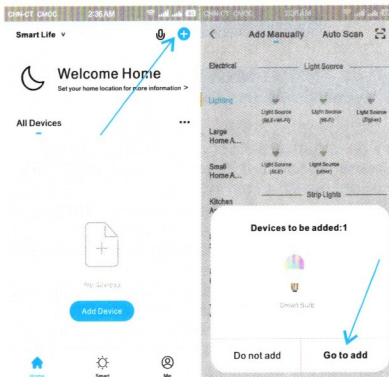
Register an account and choose your country.

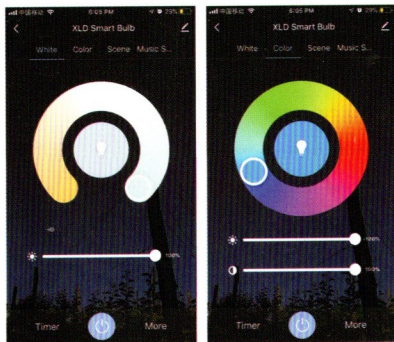
1. Connect your phone to WiFi (Only 2.4Ghz)

2. Turn on the phone's Bluetooth

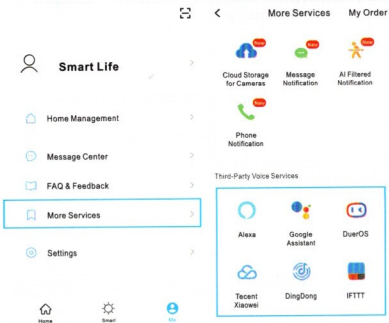
Adjust the bulb to blink

Turn on/off 3 times (on/off/on/off/on)





Connect to Alexa / Google Home



Binding your app account to your Amazon account allows you to control Alexa-enabled devices through Amazon Echo speakers(ex. "Alexa,turn on light.")

Sign In With Amazon

FAQ&Feedback

- 1.Only support 2.4GHz, not 5GHz.
- 2.The distance between the device and the router should not be too far away, which will affect the Wi-Fi signal.
- 3.Make sure the Wi-Fi password is entered correctly,just English and Numbers.
- 4.If the connection fails, please set the router safety factor to the lowest.
- 5.If the connection fails, try sharing the access point with another phone instead of the router's Wi-Fi. This method can help us determine if the Wi-Fi signal from the router is compatible with this product.

- 6.When the device is connected correctly, don't remove it; otherwise, it will be restored to factory settings and cannot be controlled directly.
- 7.If the device is offline and can't be controlled, check if the Wi-Fi is off, turn off some other connected devices, the router may be overloaded, update the application interface.
- 8.If you change the Wi-Fi password, please reconnect. When restoring factory settings, you must turn off the lamp for 10 seconds and then try again.

12-month quality guarantee

Connection failure or other problems are often caused by poor compatibility between the router and the mobile phone,please contact us, we have professional technicians to help you solve it,after we help you solve the problem, please give us a positive evaluation, we need your affirmation and encouragement, Thank you.

